

Tempo Versus Harmonic and Melodic Pacing in a Corpus of Rock Music

Trevor de Clercq

**MIDDLE
TENNESSEE**

STATE UNIVERSITY

CogMIR conference, ISMIR 2016

August 12, 2016

Columbia University



Recent scholarship on beat (i.e., *tactus*) perception

<i>Source</i>	<i>Ideal Tactus</i>
Lerdahl & Jackendoff 1983	70 BPM
Fraisse 1982	100 BPM
Parncutt 1994	100 BPM
Semjen et al. 1998	100 BPM
Moelants 2002	120 BPM
Moelants & McKinney 2004	120 BPM
Levy 2011	120 BPM

Average tempos & measure lengths for songs categorized as 4/4

	Covach 2009	Burgoyne et al. 2011	Temperley & deClercq, 2013
Number of songs in 4/4 (as percent of total songs)	61 75.3%	509 93.2%	168 84.0%
Mean BPM (standard deviation)	121.4 22.2	119.5 33.6	119.6 34.1
(median BPM)	119.0	117.9	115.5
Mean measure length	1.98 sec	2.01 sec	2.01 sec

Average tempos & measure lengths for songs categorized as 4/4

	Covach 2009	Burgoyne et al. 2011	Temperley & deClercq, 2013
Number of songs in 4/4 (as percent of total songs)	61 75.3%	509 93.2%	168 84.0%
Mean BPM (standard deviation)	121.4 22.2	119.5 33.6	119.6 34.1
(median BPM)	119.0	117.9	115.5
Mean measure length	1.98 sec	2.01 sec	2.01 sec

Average tempos & measure lengths for songs categorized as 6/8

	Covach 2009	Burgoyne et al. 2011	Temperley & deClercq, 2013
Number of songs in 6/8 (as percent of total songs)	1 1.2%	5 0.9%	6 3.0%
Mean BPM (standard deviation)	50.0 (n/a)	64.0 11.7	62.3 9.9
(median BPM)	50.0	63.1	60.3
Mean measure length	2.4 sec	1.88 sec	1.93 sec

Average tempos & measure lengths for songs categorized as 4/4

	Covach 2009	Burgoyne et al. 2011	Temperley & deClercq, 2013
Number of songs in 4/4 (as percent of total songs)	61 75.3%	509 93.2%	168 84.0%
Mean BPM (standard deviation)	121.4 22.2	119.5 33.6	119.6 34.1
(median BPM)	119.0	117.9	115.5
Mean measure length	1.98 sec	2.01 sec	2.01 sec

Average tempos & measure lengths for songs categorized as 6/8

	Covach 2009	Burgoyne et al. 2011	Temperley & deClercq, 2013
Number of songs in 6/8 (as percent of total songs)	1 1.2%	5 0.9%	6 3.0%
Mean BPM (standard deviation)	50.0 (n/a)	64.0 11.7	62.3 9.9
(median BPM)	50.0	63.1	60.3
Mean measure length	2.4 sec	1.88 sec	1.93 sec

“Heartbreak Hotel” (Elvis Presley, 1956), main material

0:00

E



Well since my baby left me, Well I found a new place to dwell. Well it's down at the end of lonely street, that Heartbreak Hotel where I'll be.

A

B

E



I'll be so lonely, baby.

Well I'm so lonely,

I'll be so lonely, I could die.

“Heartbreak Hotel” (Elvis Presley, 1956), main material

0:00

E



Well since my baby left me, Well I found a new place to dwell. Well it's down at the end of lonely street, that Heartbreak Hotel where I'll be.

A

B

E



I'll be so lonely, baby.

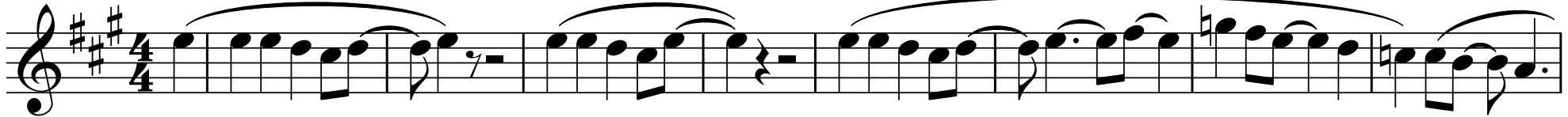
Well I'm so lonely,

I'll be so lonely, I could die.

“That’s All Right” (Elvis Presley, 1954), main material

0:05

A



Well that's all right, mama,

That's all right with you.

That's all right, mama,

just any way you do.

Well that's all

D

E

A



right,

that's all right.

That's all right now, mama,

any way you do.

PHRASE EXP.